



UPGRADE
PACKAGING INDUSTRIES

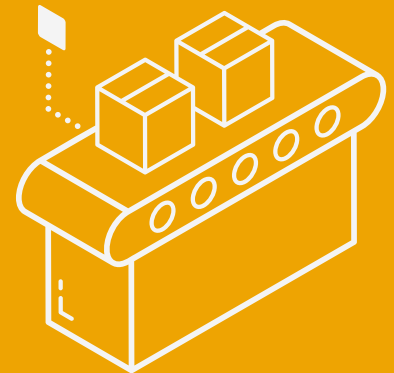
ABOUT US

UPGRADE PACKAGING INDUSTRIES

is a name of innovative and reliable packaging machinery solutions for a diverse range of industries,

including food and beverage, pharmaceuticals, automobile and consumer good etc.

We specialize in supplying high performance **machines** and **services** that optimize efficiency, reduce costs, and enhance product integrity.



**Packaging Machine
&
Consumable**



SHRINK TUNNEL

SS/MS HEAVY DUTY SHRINK TUNNEL



Machine Dimension:	2400x900x1690
Max. Packing Size:	1300x500 x 350
Tunnel Size:	1500x600x400
In Feed Conveyor Height:	850(+50)
Sealing Temperature:	0-300°C
Packing Speed:	15-25
Net Weight:	500kgs
Power Supply:	3 Phase, 415V, 50Hz, 20Kwh
Compressed Air(Kg/Cm2):	
Film Used:	PVC/PE

SEMI-AUTOMATIC WEB SEALER & TUNNEL



Machine Dimension:	1129x1305x1991
Max. Packing Size:	<700(400x400x300)
Sealing Cutter Size:	700
In Feed Conveyor Height:	850(+50)x 1500mm
Sealing Temperature:	0-200°C
Packing Speed:	3-6
Power Supply:	3 Phase, 415V, 50 Hz, 2Kwh
Compressed Air(Kg/Cm2):	6.0
Film Used:	PVC/PE
Body:	MS Powder Coated

FULLY AUTOMATIC WEB SEALER & TUNNEL



Machine Dimension:	2118x1611x2132mm
Max Product Size:	600x500x400
Sealing Blade length:	700mm
Temperature:	0-200°C
Working Table Height:	850+50mm
Packing Speed:	8-15 packs/mins
Net Weight:	700Kgs
Power:	4 Kw
Power Supply:	3 Ph 380V 50Hz/60 Hz
Compressed Air:	6-8 Kg/cm2
Applicable Film:	PE



L SEALER

SHRINK TUNNEL



Machine Dimension:	1200x700x1465mm
Tunnel Chamber Dimension:	900(L)x350(W)x 250(H)mm
Power Requirement:	3 Phase, 380-415V, 50 Hz, 6Kwh
Packaging Speed:	20 to 30 packs per/min
Net Weight:	110 Kgs

L-SEALER



Power Supply:	1 Phase, 220V, 50Hz
Power Load:	1.2 KW
Max. Packaging Dimension:	550x450x150mm
Max. Sealing Size:	500x400mm
Overall Dimension:	1569x710x1060mm
Net Weight:	125 Kgs
Applicable Film:	POF/PVC
Max. Speed (Pc/Hr)	500 to 800 pcs per/ hrs

AUTOMATIC L SEALER & TUNNEL



Sealing Area:	450x550mm
Product Pass thru Height:	<150mm
Max. Packaging Size(L+H):	<500mm
Max. Packaging Size(W+H):	<430mm
Packing Speed-Pieces per min:	15-25
Max. Film Width:	550mm
Sealing Platform :	Adjustable with(C)seal
Requirement:	3 ph ,380 - 415 ,9.5 kwh
Air Pressure:	5.5Kg/cm2
Machine Dimension:	1685x828x1480mm
Net Weight:	225Kgs.

TABLE TOP VACUUM PACKAGING MACHINE



Chamber :	Single Fiber Hull
Voltage (V/Hz):	1 Ph, 220V/50
Vacuum Pump Power:	370W
Sealing Power:	500W
Sealing Width:	10mm
Lowest Pressure :	1(Kpa)
Sealing position:	1
Volume Chamber:	386x280x90
Sealing Length:	260
Air Charging Volume:	10 (m3/h)
Material For Vacuum:	Stainless Steel
Weight:	35

SINGLE CHAMBER VACUUM PACKAGING MACHINE



Chamber :	Single Fiber Hull
Voltage (V/Hz):	1 Ph, 220V/50
Vacuum Pump Power:	750W
Sealing Power:	650W
Sealing Width:	10mm
Lowest Pressure :	1(Kpa)
Sealing position:	2
Volume Chamber:	500x450x100
Sealing Length:	500
Air Charging Volume:	10 (m3/h)
Material For Vacuum:	Stainless Steel
Dimension:	610x520x900

DOUBLE CHAMBER VACUUM PACKAGING MACHINE



Voltage:	3 Phase 415/50Hz
Vacuum Pump Power:	1500W
Sealing Power:	600W
Sealing Width:	10mm
Lowest Pressure:	1 (Kpa)
Sealing Position:	2
Volume Chamber:	610x550x150
Sealing Length:	510

UPGRADE PACKAGING INDUSTRIES

Contact Us

Address: Chirdharpur Road, Chhaprola,
Greater Noida, Gautam Budh Nagar, U.P 201009

Email: sales@upgradepackaging.in
service@upgradepackaging.in
Contact Us: +91 98738 67776, +91 98735 67776
Website: upgradepackaging.in